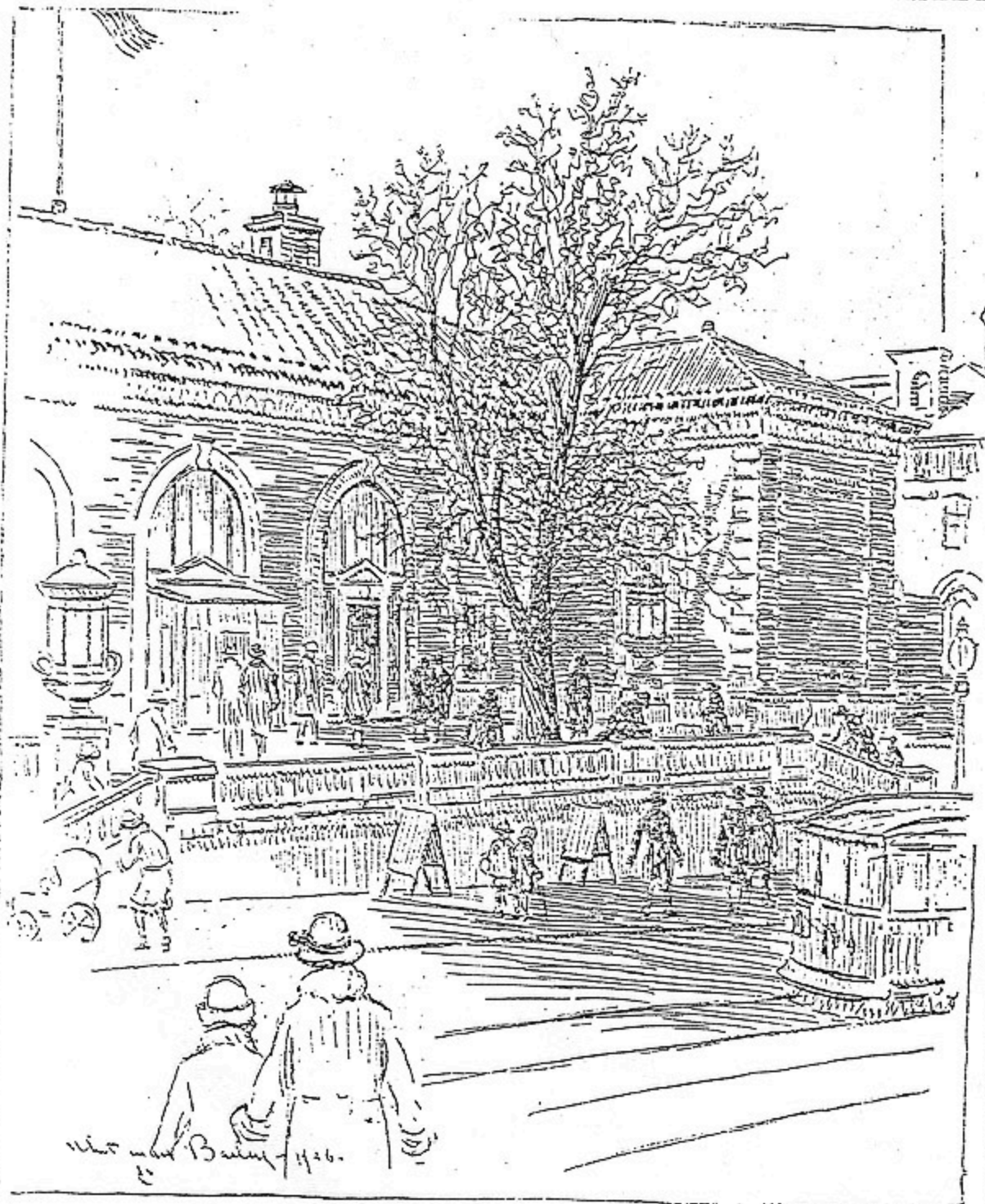


A GLIMPSE OF STAMFORD POST OFFICE BY ARTIST BAILEY.



This week, Mr. Bailey presents a characteristic view of the Post Office entrance. While not attempting to show the entire structure, the artist has included enough to identify the architectural features of this imposing building, the principal one of

which is the beautiful entrance consisting of three arched doorways. The stone steps and esplanade with the beautiful balustrade, and ornamental lamps are other interesting features of this building.

Although heroic measures have been taken to preserve the once

prominent trees that stood on this site, but one remains, and this, as shown in the drawing, has lost much of its former size and symmetry. This last reminder of Atlantic Street's former beauty as an avenue of shade trees seems to be about ready to follow its fellows into oblivion.